

Thunderbolt 4 Smart Dock

DBD8400



Massive
Deployment



Energy
Saving



Firmware
Upgrade



Security
Enhancement



Remote
Management



Data
Visualization



Featuring advanced Thunderbolt 4 technology, the DBD8400 serves as a brand new smart managed dock. Leveraging cloud management, its data visualization dock management portal offers seamless remote I/O port management, LAN-driven firmware updates, and mass deployment, ensuring effortless management for IT administrators. Its intelligent power control features enable scheduled power-off functions, aligning seamlessly with ESG trend and promoting energy efficiency. The platform provides real-time monitoring and notifications for the dock's status, solving problems remotely and immediately, and reducing maintenance costs. Additionally, the portal can detect any unprovisioned dock, allowing IT administrators to add the dock via the portal or APP, safeguarding the company's hardware and information security. Beyond intelligence, the DBD8400 also supports content extension to 4K resolution displays and power delivery, ensuring information security and uninterrupted productivity for enterprises and professionals.

Feature

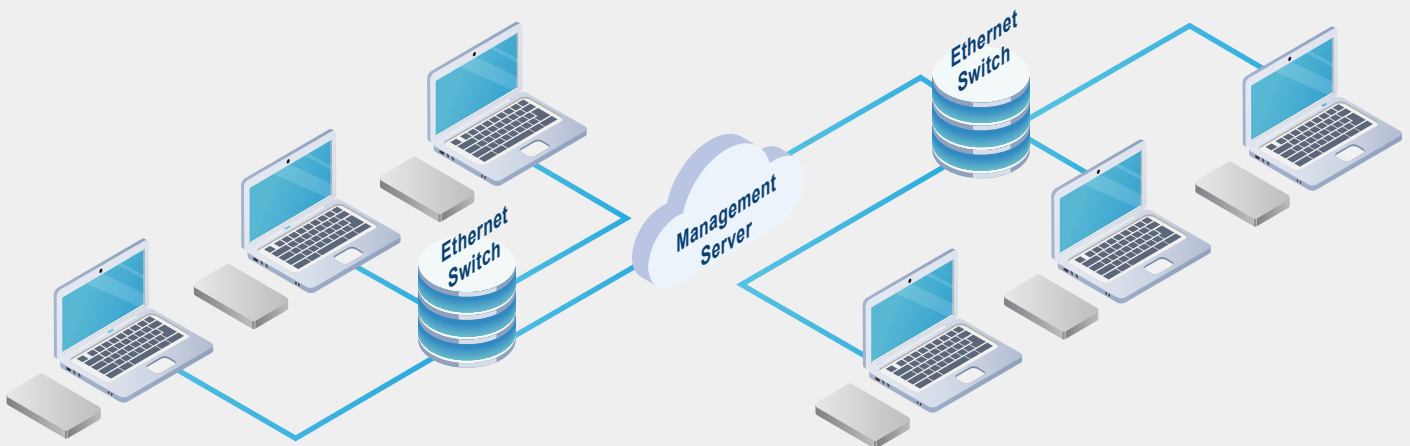
IoT

- ✓ Remote dock management, firmware upgrade, and troubleshooting via the smart dock management portal.
- ✓ Easy-to-use smart dock portal with a data visualization dashboard, dock monitoring and control, real-time notifications, and usage record analytics.
- ✓ Scheduled power on/off settings for better energy-saving performance.
- ✓ Security enhancement with automatic portal detection of unassigned devices.
- ✓ Ideal for mass dock deployment and management.

Dock

- ✓ Thunderbolt 4 technology.
- ✓ One Thunderbolt 4 UFP with PD charging up to 90W.
- ✓ 1× Thunderbolt port and 2× DP output, Dual 4K60 displays.
- ✓ USB DFP with 1× TBT4/USB-C, 1× USB-C 10G, 3× USB-A 10G, and 1× USB-A 2.0, Built-in LAN and audio ports.

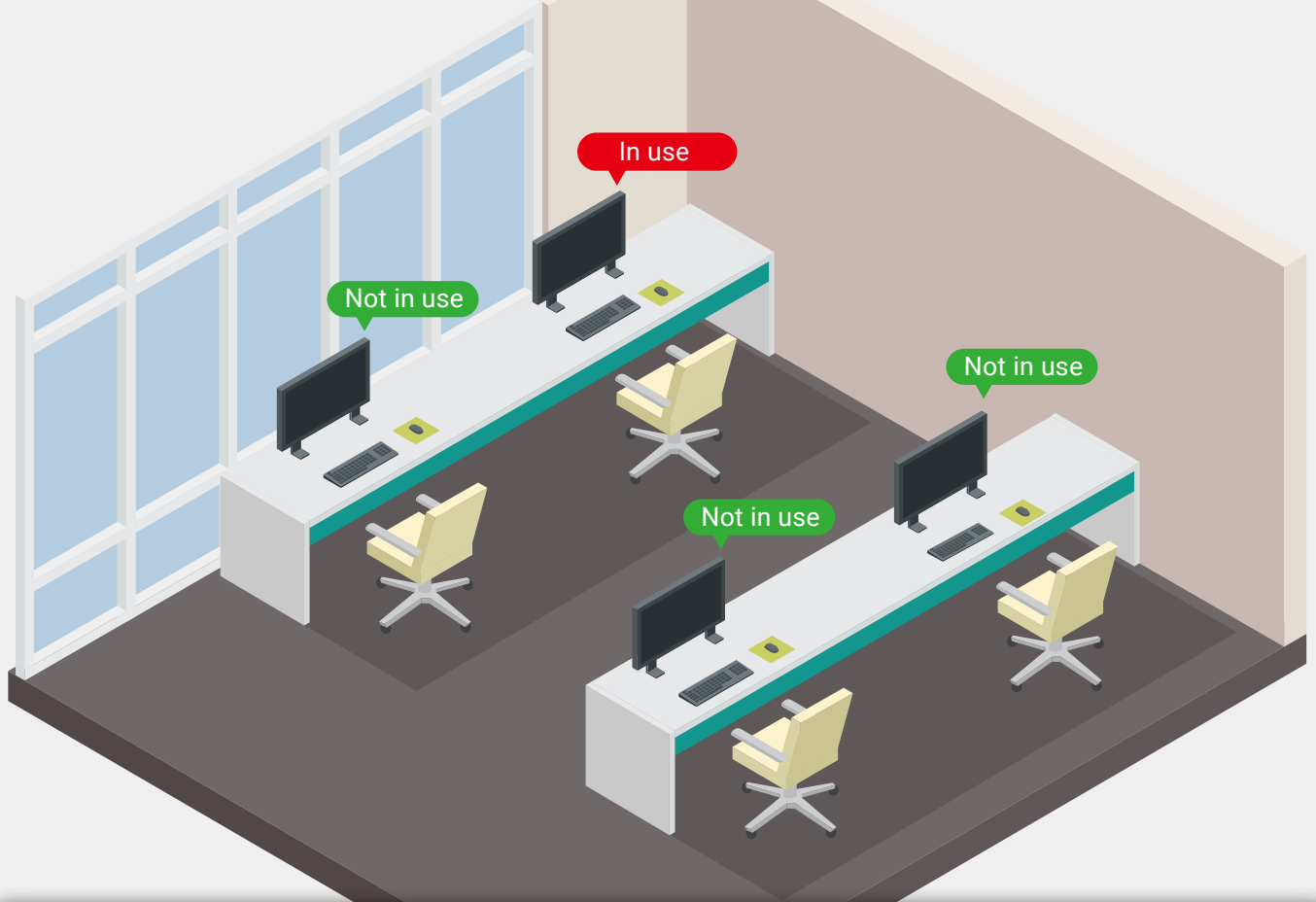
Advantages of Good Way's Smart Dock with Portal



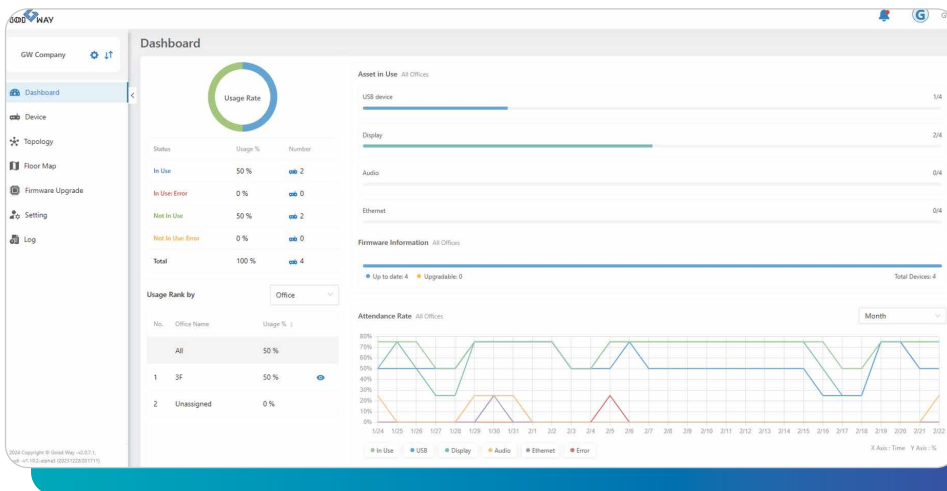
Good Way Cloud Management System is designed to manage docking stations for an entire company or organization, offering the flexibility to operate as either a public cloud or an on-premises server. This system provides IT managers with comprehensive tools to efficiently handle dock management tasks, including firmware updates, remote access control for USB peripherals and monitors.

With a rich set of features, the system allows IT managers to effortlessly implement access controls and even schedule automatic shutdowns of equipment after work hours to promote energy savings. The system's user-friendly web management interface provides a detailed, visual approach to managing all aspects of the docking stations, ensuring smooth and efficient operations.

One of the standout features of this system is that it requires no additional software installation on individual computers. Even in situations where no computers are connected, the docking stations can seamlessly connect to the server and perform all necessary functions, making it an incredibly versatile and powerful tool for any IT management team.

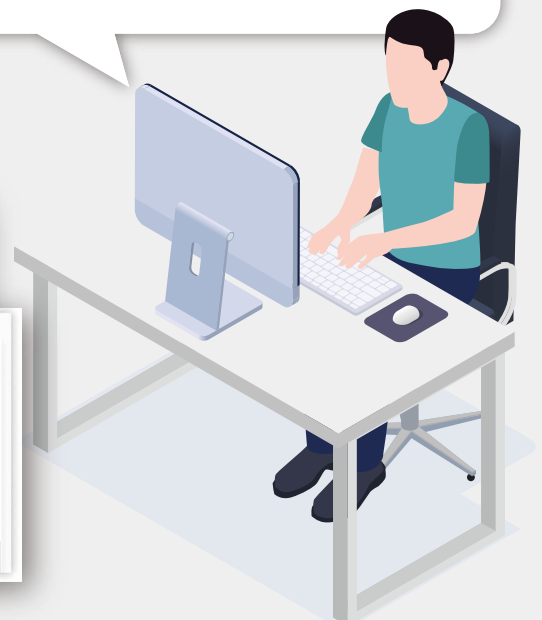
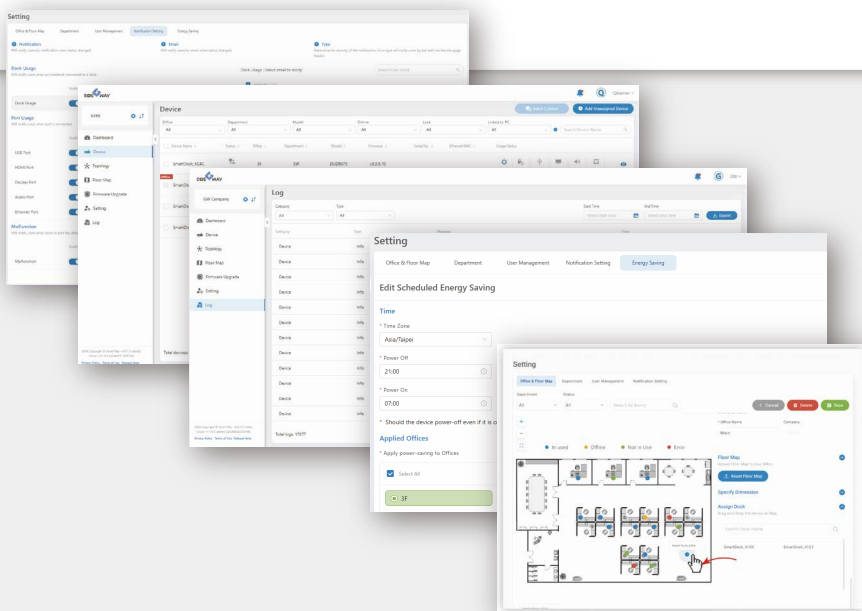


Dashboard



Function

- ✓ **Device List**
- ✓ **Floor Map**
- ✓ **Energy Saving**
- ✓ **Log**
- ✓ **Notification**



Thunderbolt 4 Smart Dock



- 1 USB-A 10G (BC1.2)
- 2 USB-A 2.0
- 3 3.5mm TRRS Headset Audio Jack
- 4 TBT4 / USB-C to laptop
- 5 Power Button
- 6 K-Lock
- 7 Power in
- 8 DisplayPort
- 9 TBT4 / USB-C
- 10 RJ45
- 11 USB-C 10G
- 12 USB-A 10G (BC1.2)

Specification

Model	DBD8400
Description	Thunderbolt 4 Smart Dock
Maximum Display	2× 4K60Hz
Legacy Display	2× DisplayPort
Thunderbolt Upstream	1
Thunderbolt Downstream	1
USB Downstream	1× USB-C 10G 3× USB-A 10G (BC1.2) 1× USB-A 2.0
LAN	1× RJ45 (1GbE)
PD	PD90W
Power Supply	DC 135W

* HDMI™ or HDMI® is the trademark and registered logo legally hold and belonged to HDMI Licensing Administrator, Inc. that legally authorizes Good Way Technology for the trademark usage over activities of product and marketing.

* All services and products' photos, pictures, specifications, function descriptions, or predictions are provided as reference for clients only. All services and products are provided by the agreed written between clients and us. Please contact our sales representatives for more information per your needs.

20241122_V1.0



GOOD WAY TECHNOLOGY CO., LTD.

3F, No. 135, Ln. 235, Baociao Rd., Sindian Dist., New Taipei City 231, Taiwan

Tel: 886-2-8919-1200 Fax: 886-2-8919-1220~1



www.goodway.com.tw



sales@goodway.com.tw